

# Perfect Pairings.



## Simple and straightforward.

Starting with simple procedures will help drive early confidence and success when using the Filtek Matrix. Many patients already in your practice may have peg laterals or diastemas they would treat if aware of a simple, conservative treatment option. Cases like these can be excellent candidates for your first few procedures.

## Keys to identifying your first 3M™ Filtek™ Matrix patients.

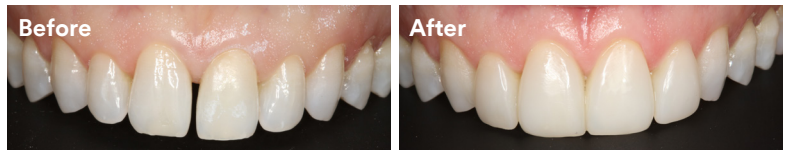
Now that you've had a chance to get familiar with the Filtek Matrix, you're ready to include it as a treatment option when discussing your patients' goals for their teeth. You're ready to offer them a more affordable and efficient solution for simple to complex restorative procedures.

### Peg Lateral



*Photos courtesy of Dan Poticny, DDS, PA*

### Upper Veneer



*Photos courtesy of Adam Hodges, DDS, PA*

## Bigger treatments, bigger benefits.

Now that you're comfortable with the Filtek Matrix, you may consider more complex procedures like full maxillary cases. Using the matrix on more complicated procedures can lead to significant time savings—and help you grow your practice.

### Diastemas



*Photos courtesy of Lois Duerst, DDS*

### Lower Veneer



*Photos courtesy of Lois Duerst, DDS*

## Filtek Matrix Case Selection

Take your bonding digital today! The matrix brings predictability and efficiency that lets you deliver more smiles from the straightforward to the complex.

Straightforward				Complex		
Peg Laterals	Single Diastema Closure	4 Maxillary Composite Veneers	Multiple Diastema Closures	Full Maxillary Case (1st premolar to 1st premolar) Diastemas/Veneers/Worn Dentition	Mandibular Case (Canine to Canine) Diastemas/Veneers/Worn Dentition	Full Maxillary/Mandibular Combination Case